

# MAXIM860

860 MP Airborne Mapping Systems  
New Generation Aerial Camera  
Compatible with Fixed Wing and Helicopter



CapitolArc



## MAXIM860

860 MP Large Scale Photogrammetric 3D Cluster Modeling Software

Large Scale and Stable Aerial Triangulation , Successful Calculation rate 99%+

No Data Limit , Multi-Block Union , Multi-Machine Parallel Aerial Triangulation

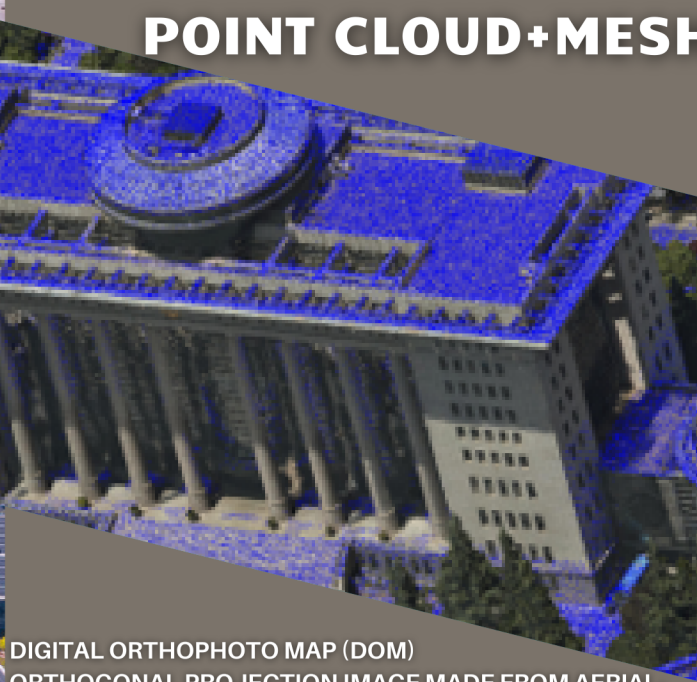
[info@capitolarc.com](mailto:info@capitolarc.com)



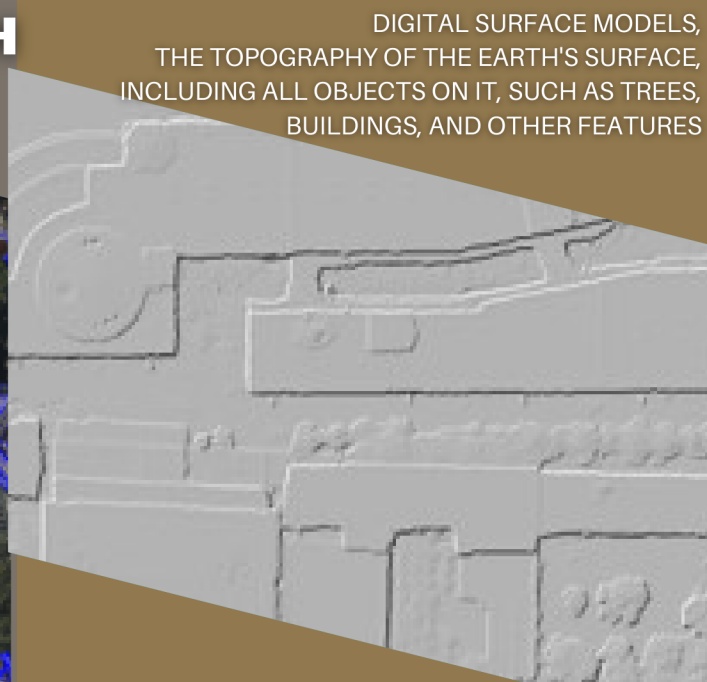
**MAXIM860 FEATURE :**

**POINT CLOUD+MESH**

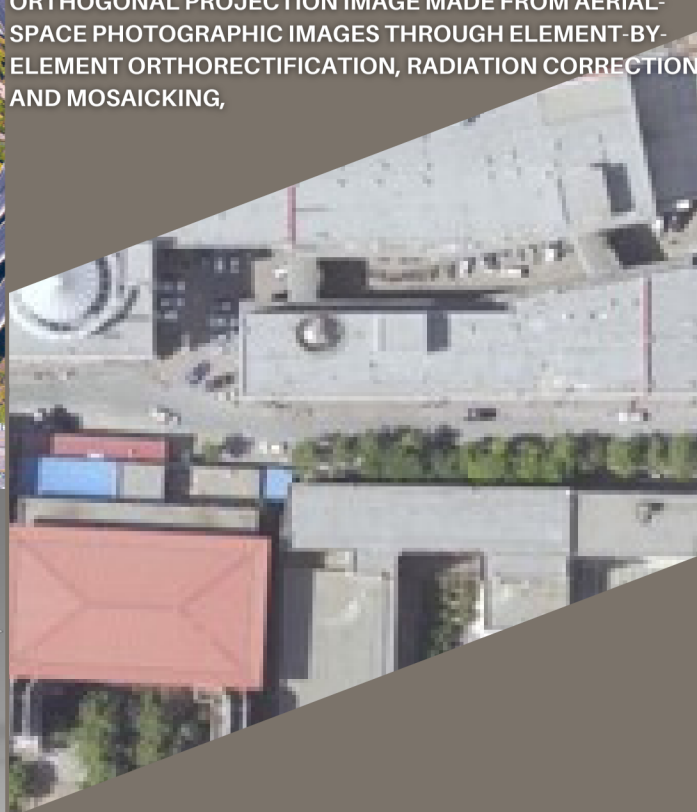
DIGITAL SURFACE MODELS,  
THE TOPOGRAPHY OF THE EARTH'S SURFACE,  
INCLUDING ALL OBJECTS ON IT, SUCH AS TREES,  
BUILDINGS, AND OTHER FEATURES



DIGITAL ORTHOPHOTO MAP (DOM)  
ORTHOGONAL PROJECTION IMAGE MADE FROM AERIAL-  
SPACE PHOTOGRAPHIC IMAGES THROUGH ELEMENT-BY-  
ELEMENT ORTHORECTIFICATION, RADIATION CORRECTION,  
AND MOSAICKING,



**3D CLUSTER MODELING**



2 in 1 Fixed Wing and Helicopter Usage



**CapitolArc**

More Information : [Info@Capitolarc.com](mailto:Info@Capitolarc.com)