

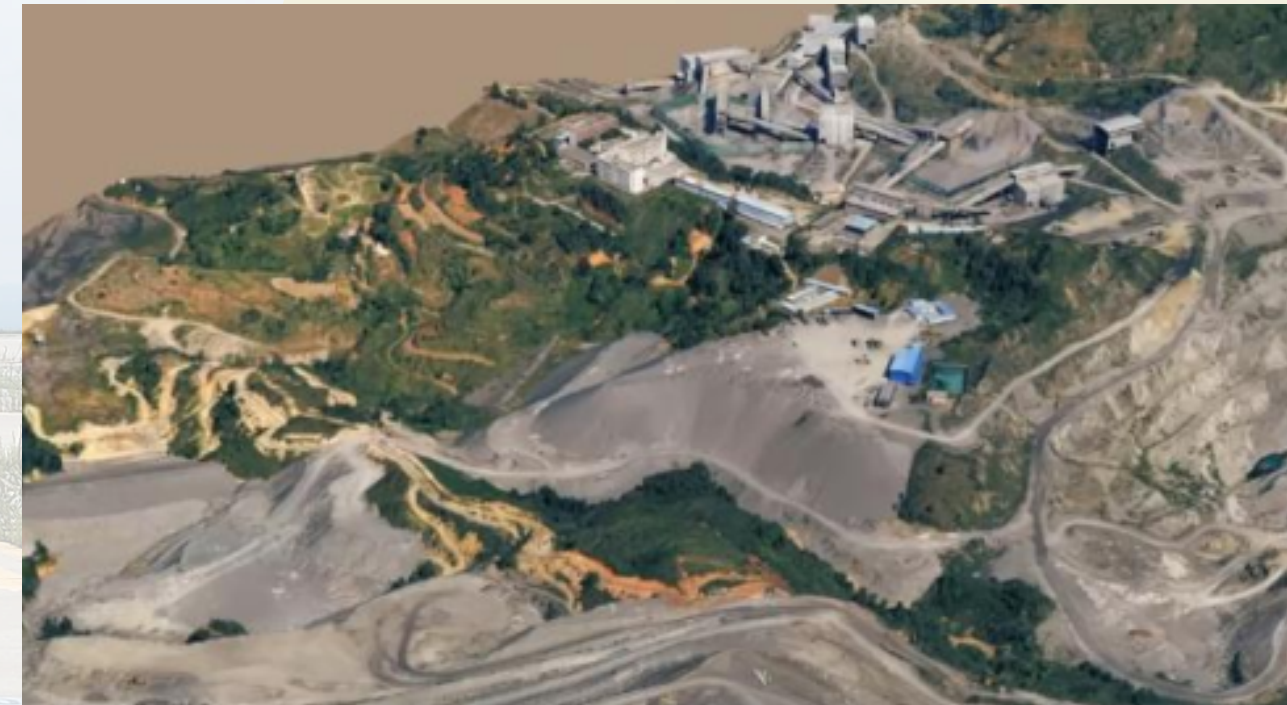
Revolutionize Your Operations with Unmatched Efficiency and Precision

The SkyForge UAV is engineered to simplify complexity and deliver results faster than ever. Combining advanced surveillance, high-resolution 3D mapping, and accurate point cloud generation into a single, seamless system, it's the ultimate tool for government agencies, construction companies, and environmental researchers who demand precision without compromise.

# SKY FORGE



## 3D Aerial Photography



## Ortho Aerial Photography



## Main Features of SkyForge UAV

- ✓ 3-in-1 System: One drone, three powerful capabilities—surveillance, 3D mapping, and point cloud generation.
- ✓ Faster, Simpler, Smarter: Streamline workflows with intuitive technology that eliminates complexity and maximizes efficiency.
- ✓ Pinpoint Precision: Capture every detail with unmatched accuracy, ensuring reliable data for critical decision-making.
- ✓ Long-Range Performance: Tackle large-scale projects with confidence, thanks to extended flight times and superior range.



# Solve Complex Challenges with Ease

# SKY FORGE

From monitoring critical infrastructure to mapping vast terrains and analyzing environmental changes, the SkyForge UAV transforms complicated tasks into streamlined processes. It's not just a drone—it's your partner in innovation, designed to deliver results that matter.

## FUSION 4K-T1024 / SURVEILLANCE

4KCamera & 1024 Uncooled Thermal POD combines ultra-high-definition 4K imaging with advanced 1024-resolution uncooled thermal technology, delivering unmatched clarity and precision for both visual and thermal detection in a single compact system.

channels: 1408 channels

GPS: L1C/ A, L2P (Y), L2C, L5

GLONASS: L1, L2, L3\*

Galileo: E1, E5a, E5b, E6\*

BeiDou: B1I, B2I, B3I, B1C, B2a, B2b

QZSS: L1, L2, L5, L6\*

PPP: B2b-PPP

SBAS: L1, L5

Real time kinematic (RTK):H: 8 mm + 1 ppm RMS;

V: 15 mm + 1 ppm RMS

## SKYFORGE UAV

UAV Type: Hybrid fuel-electric vertical take-off and landing (VTOL) fixed-wing UAV.

Dimensions: Wingspan 4.8 x 2.65 x 0.93 m (visually).

Weight: Maximum takeoff weight 75 kg (document), maximum load weight 15 kg (document).

Performance:

- Flight time: 10 hours without payload (demo).
- Cruising speed: 100-120 km/h (demo).
- Maximum flight speed: 130 km/h (demo).
- Max. takeoff altitude: 3000 m (demo).
- Wind resistance: Up to 7 levels (document).
- Chart transmission distance: Up to 100 km (above 3000 m).

Storage: Two boxes for wings and fuselage with wheels.

learn how the SkyForge Drone can empower your projects with speed, simplicity, and precision.  
Contact our sales team today :



ARANTECH

info@Arantechsolution.com  
www.Arantechsolution.com